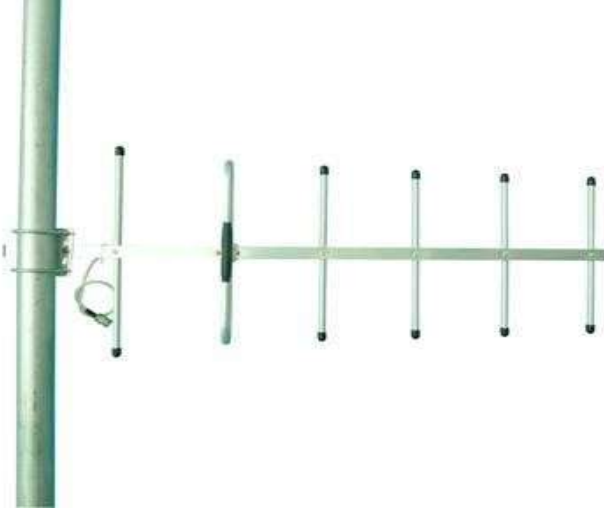


433-472MHz

Directional Yagi Antenna DRFA-433Y



Features:

- High Gain
- Aluminum Alloy frame
- Full day for working
- Optimized dimension
- Optional installation H or V

Application:

- PMR • RFID • Wireless Data
- Wireless Access • Radio Modems

Electric Specification

Frequency Range - MHz	433-472Mhz
Bandwidth - MHz	30
Gain - dBi	468Mhz @ 12Dbi
Element	7
Beam Width - °	H:42 V:38
- dB	≥16
VSWR	≤1.6 @ 433/434Mhz ≤1.7 @ 435Mhz ≤2.4 @ 446Mhz ≤1.5 @ 465Mhz ≤1.2 @ 468Mhz ≤1.5 @ 472Mhz
Input Impedance - Ω	50
Polarization	Horizontal or Vertical
Max Power - W	100
Lightning Protection	DC ground
Connector Model	SMA

Mechanical Specification

Size - mm	770*35 0*80
Cable Length - m	2 Meter RG-58 Cable
Antenna Weight - Kg	0.55
Working Temperature - °c	-20~ 55
Rated Wind Velocity - m/s	60
Clamp	U type
Pole Diameter - mm	Φ40~Φ50